

Sustainable model: Integrated values

Te Hōnonga a Iwi Restoring Rosedale Park is an integrated model that delivers a socio-environmental restoration project using regenerative agricultural methods on public land and a commitment to decarbonising and promoting a circular economy to:

- Mitigate and adapt to climate change
- Increase sustainable development and business resilience
- Increase ecological value and social equity
- Improve community connection, health and wellbeing
- Prove innovative, sustainable land management methods

This 10-year pilot programme, lead by North Harbour Hockey Association, is a collaboration between iwi, the commercial, education and sporting sectors and the public, delivering intergenerational intercultural inclusion, climate-positive nature-based solutions and holistic connection between people, place and business.



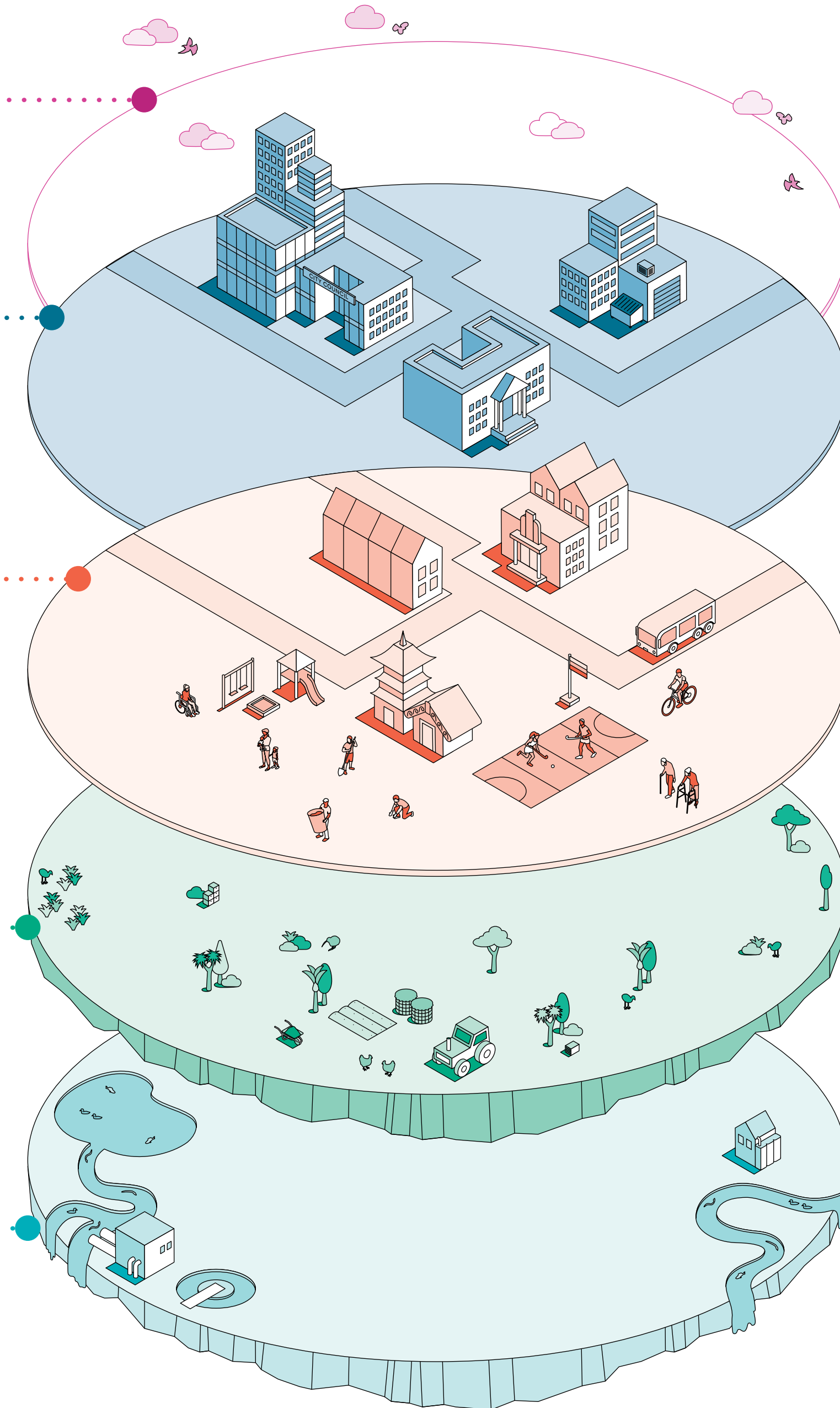
Atmosphere: We combat climate change by taking action to remove carbon from the atmosphere and reduce greenhouse gas emissions. [Learn more](#)

Business: We partner with local businesses, NGOs and council to demonstrate leadership in sustainable development and leverage expertise and resources for environmental restoration. [Learn more](#)

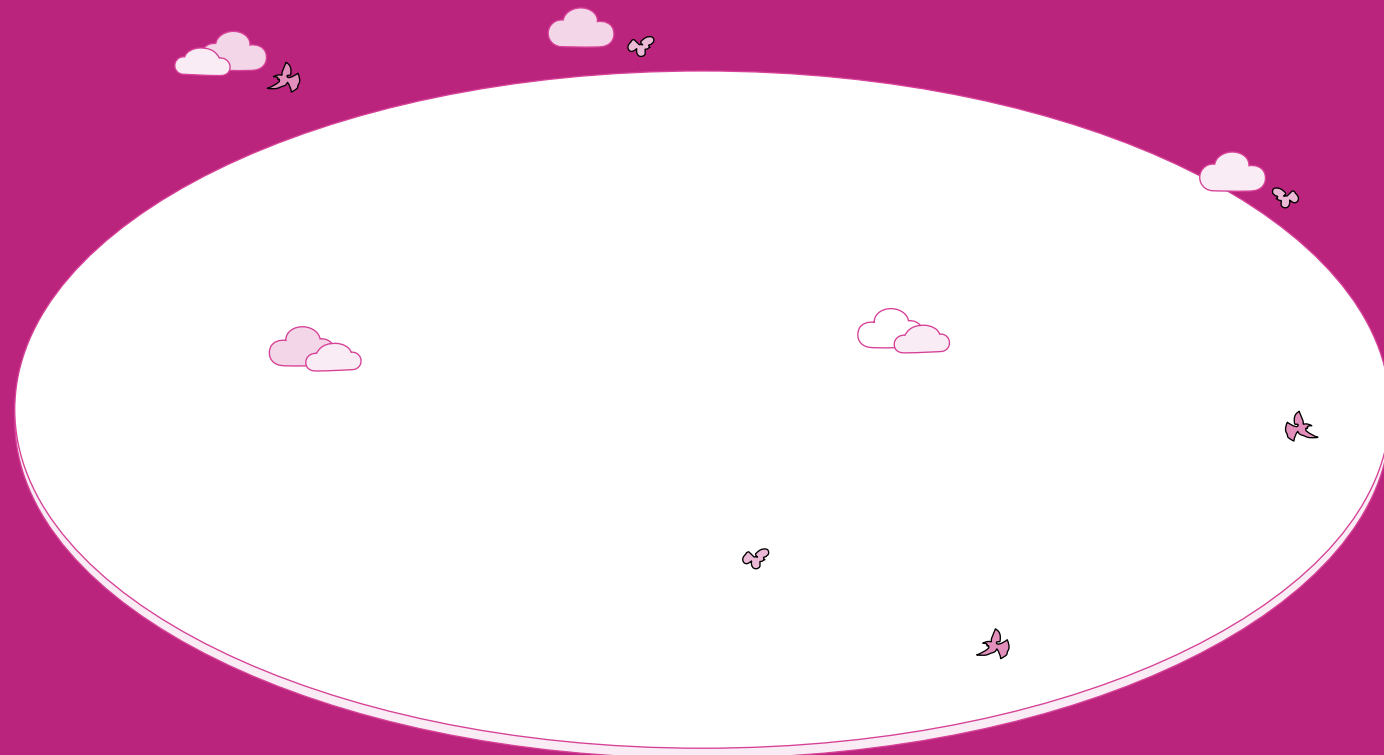
Community: We facilitate contribution to environmental restoration from iwi, centres of learning for all ages, the sporting sector, and diverse local community groups and residents, providing opportunities to develop knowledge and skills, a sense of purpose and better health and wellbeing. [Learn more](#)

Environment: We protect and restore the land, using sustainable and regenerative methods to plant natives, manage pests, improve soil quality and create a better home for our people and the birds, reptiles and insects that make up New Zealand's fauna. [Learn more](#)

Water: We protect and improve precious water resources through water conservation and recycling and land management practices that reduce erosion and soil runoff. [Learn more](#)



Atmosphere



UN Sustainable Development Goals

7

AFFORDABLE AND
CLEAN ENERGY



11

SUSTAINABLE CITIES
AND COMMUNITIES



12

RESPONSIBLE
CONSUMPTION
AND PRODUCTION



13

CLIMATE
ACTION



The things that we do

Our regenerative approach to restoration and our planting and cover crop programme promotes photosynthesis, which sequesters carbon

We share transport or walk to the restoration site

We work with local suppliers, schools, businesses and volunteers to reduce travel

We reuse, recycle and repurpose at the site so we have a positive impact on the local waste stream

We measure our carbon footprint to understand the effect the project is having on the environment

We carry out annual bird counts and bat echolocation

The difference we make

Because we...

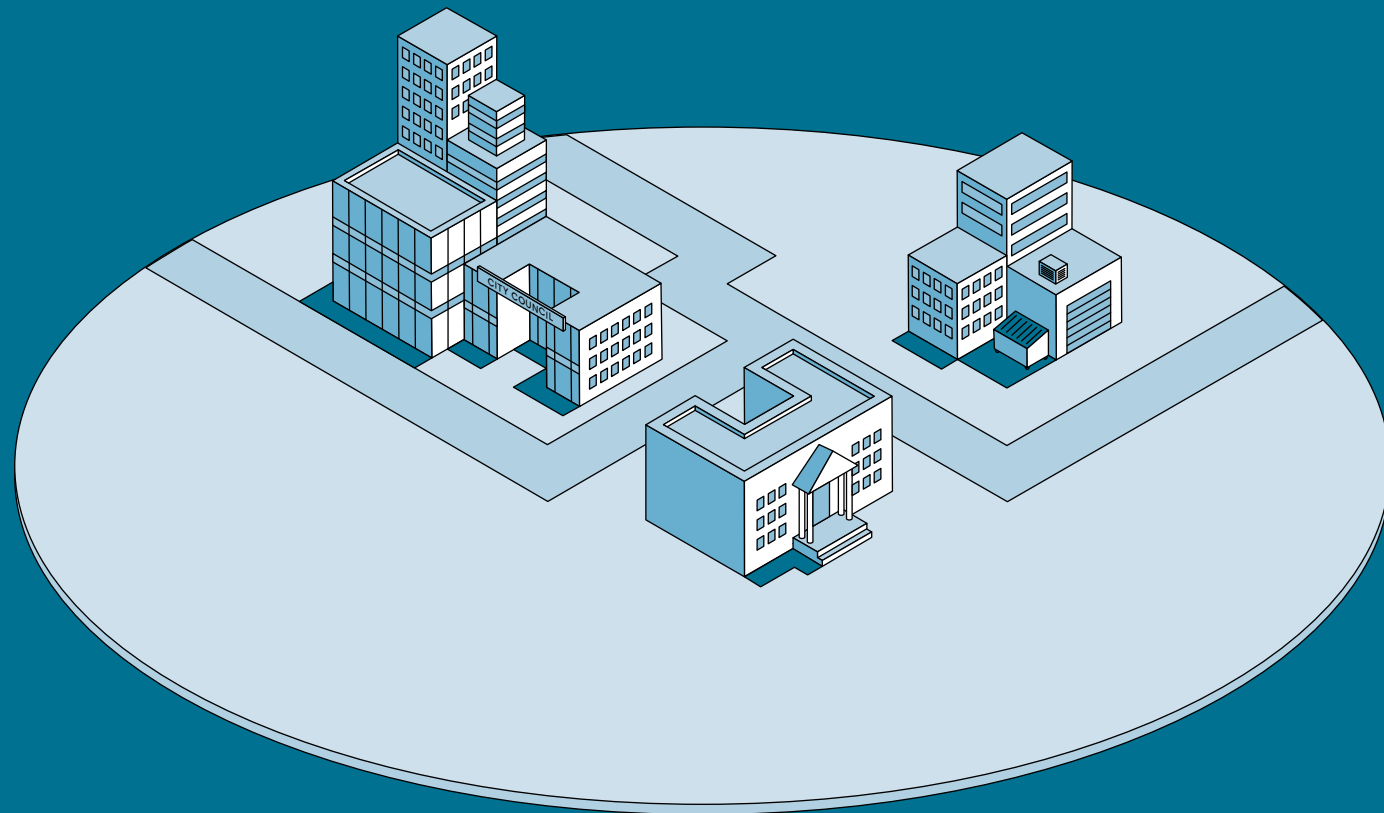
- Remove carbon from the atmosphere and put it back in the soil
- Reduce greenhouse gas emissions

... we are mitigating against and adapting to global warming impacts such as:

- Rising sea levels
- Flooding
- Fire
- Drought
- Storms
- Food and water shortages
- Damage to infrastructure
- Unemployment

We create a healthier atmosphere for local bird life

Business



UN Sustainable Development Goals



The things that we do

We demonstrate how SMEs can lead the way in sustainable development

We enable local businesses to partner with the restoration through:

- Integrated working bees that offer team building and networking opportunities
- Providing goods and services
- Sharing skills and knowledge
- Donating funds

We work with our local business associations to inform and inspire organisations to begin their own sustainable journey

We create resources to show businesses how they can strengthen organisational readiness and resilience through planning for climate change

We showcase local business involvement in the restoration through our website, social media platforms, award entries and media opportunities, enhancing their brand reputation as environmentally sustainable organisations

We secure third party endorsement for our mahi through entering awards programmes and collaboration with sustainability leaders

The difference we make

Around 60 organisations are learning about and contributing to improving environmental sustainability and mitigating climate change by partnering with Te Hōnonga a Iwi. These include:

- Auckland Council/Upper Harbour Board
- North Harbour Hockey
- Iwi organisations
- Massey University
- Early childhood education centres
- Local businesses, not-for-profits and NGOs

Business contribution has generated more than \$400k in value to the project

We have created 90 online news stories and a Facebook and Instagram presence that is increasing the reach of the project beyond the local area

We have strengthened the local supply and value chain

We have increased B2B connectivity in Rosedale

We have provided businesses with the opportunity to showcase their sustainability credentials through partnering in the restoration

We have removed materials from business waste streams

We have shared learnings from the model with the wider business community through a Sustainable Business Network case study and the North Harbour Hockey Integrated Value Report

Community



UN Sustainable Development Goals



The things that we do

We ensure mana whenua, the education sector, ethnic communities, sports clubs, ecology networks, families and the public are collaborative partners in the restoration

We deliver working bees, school visits and study days for students to allow them to fulfil volunteer service requirements, increase skills for their CVs and gain knowledge

We harness the expertise and skills of the local community, including specific cultural groups, through community working bees and initiatives such as our seed whakapapa programme

We develop Youth Leaders across all aspects of the restoration, teaching them new skills and pairing them with expert mentors.

We create programmes that allow people of all ages and abilities to offer value to the restoration.

The difference we make

Local iwi are engaged contributors, sharing their knowledge and supporting the local community to be good kaitiaki of Rosedale Park

We provide increased physical and mental health, skills and knowledge development, social connections, and a purpose and sense of belonging for more than 2500 volunteers, aged from two to 84, including:

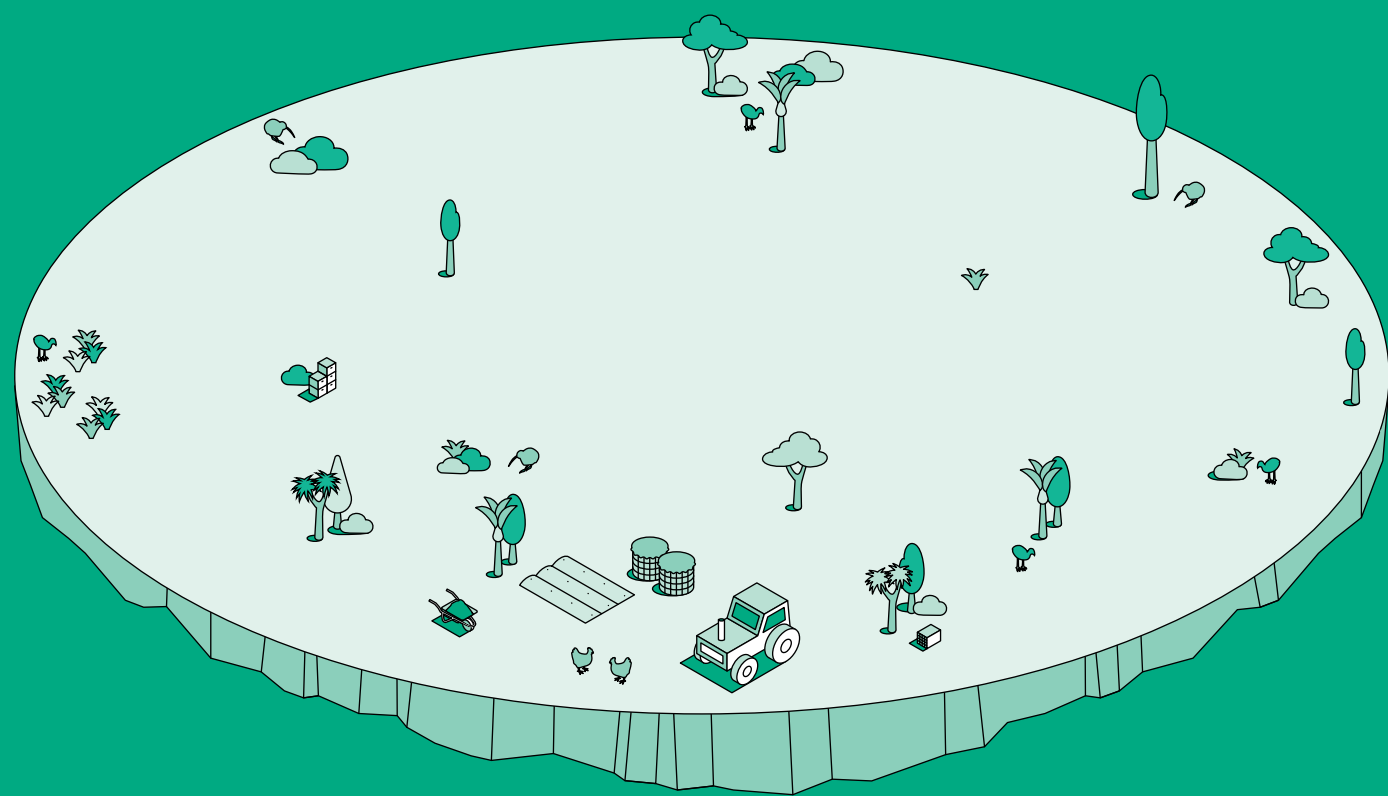
- Ngāti Whātua o Kaipara whānau
- Students and teachers from nine schools, including centres of learning that support students managing mixed abilities and neurodiverse students
- Older adults from three local lifestyle villages
- 20-plus Youth Leaders
- Members of the North Harbour Hockey community
- Local residents committed to supporting environmental restoration

We have contributed to a documentary project that will measure the social value chain of volunteering on an environmental restoration

We are developing the next generation of committed, knowledgeable climate change champions who will help us tackle the greatest existential threat humanity has faced

We are increasing social equity by giving diverse communities a voice in mitigating climate change

Environment



UN Sustainable Development Goals



The things that we do

We use regenerative methods on the restoration site — no sprays, chemicals or commercial fertilisers

We create bio-organic compost from pest plant material and mulch and inoculate it with healthy soil microbes, then reinvest on site

We plant native plants, sourced within Tāmaki Makaurau, and sow cover crops in stages across the restoration site

We run a seed whakapapa programme — seeds are collected from local native plants, nurtured and replanted at the restoration

We monitor tree survival and growth rates

We use chickens for onsite land clearance and inground composting

We monitor soil quality through annual soil microscopy

We undertake animal and plant pest management

We undertake annual monitoring of bird and native bat species

We have removed 20m³ of inorganic waste from the site

We have restricted our waste to fill to one cubic metre

We contribute to the work of the local ecological network Upper Waitematā Ecological Network

The difference we make

More than 7000 trees and plants, representing a diverse range of native species, have been planted across a 7000m² area of the park

A range of cover crops designed to improve soil health and discourage pest plants have been sown across a 7000m² area of the park

We have produced 20 tonnes of organic compost which can be used to accelerate healthy cover crop and plant growth across the restoration

We are contributing to climate change mitigation by supporting circularity and the carbon cycle through regenerative methods

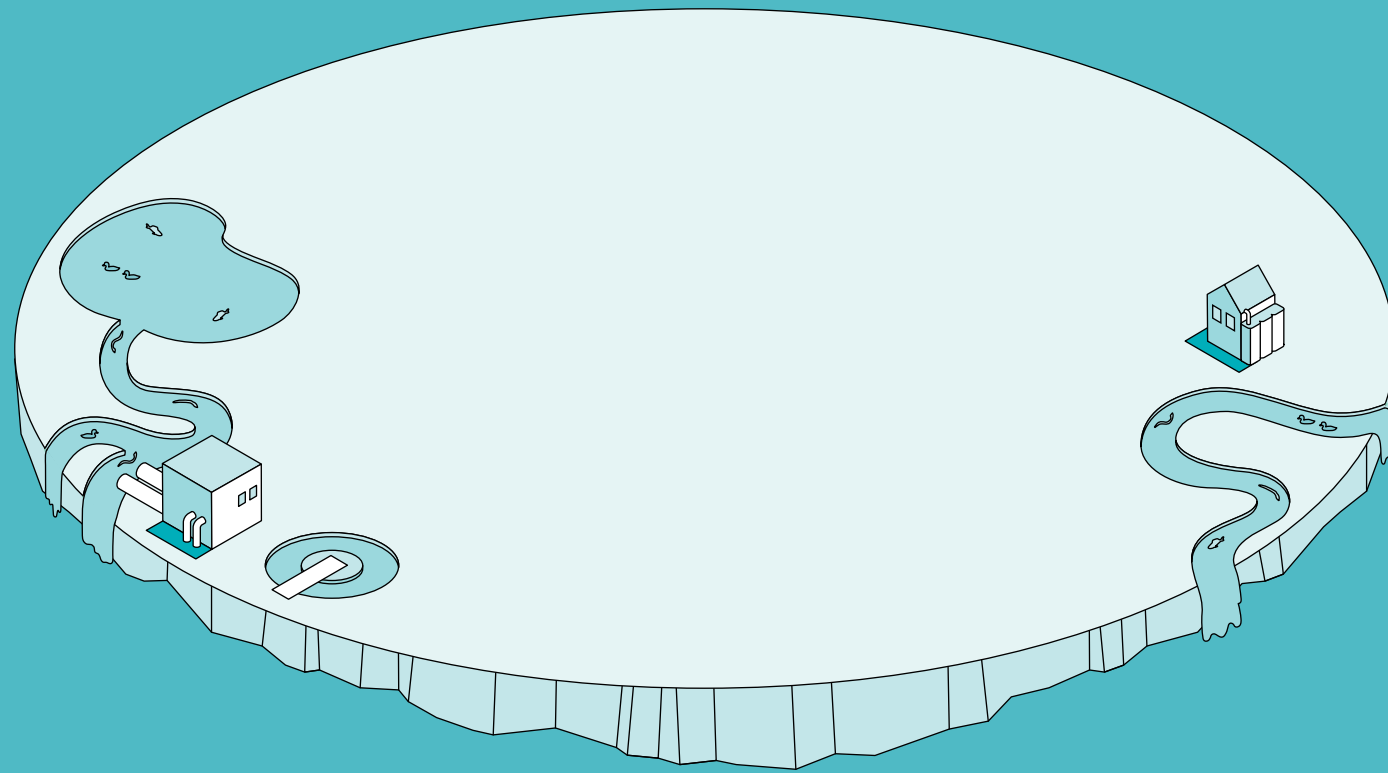
We have 14 pest traps in place along a trapping line that extends through the restoration site and neighbouring reserve land, catching rats, possums and mustelids

We have caught, assessed and managed 10 wild cats

More than 65 people, ranging from very young school children though to older adults, are collecting and growing local seeds to ensure we can plant natives with a better chance of survival

We are collecting evidence on soil health and plant growth and survival rates (through use of a control section) to demonstrate the advantages of working with nature to have a better relationship with the whenua

Water



The things that we do

We monitor and report stream health through monthly water quality analysis

We have collected more than one million litres of roof water for use on the project

We have partnered with Watercare to use recycled water at the restoration site

We take part in regional coastal/river clean ups, focusing on Alexander Stream and its tributaries

We undertake bio aquatic diversity assessments in Alexander Stream

We plant trees and cover crops to reduce soil runoff into waterways within the project site

The difference we make

Pollution events or changes in water quality are tracked and reported so they can be quickly dealt with by the relative authority

We are collecting evidence around water quality improvement that can inform best practice across New Zealand

We reduce water pollution by reducing soil runoff and erosion across the site

We are conserving water, one of the earth's most precious resources, by using rainwater and recycled water across the restoration site

We are gathering evidence on how increased water quality can improve bio aquatic diversity

UN Sustainable Development Goals

7

AFFORDABLE AND CLEAN ENERGY



11

SUSTAINABLE CITIES AND COMMUNITIES



12

RESPONSIBLE CONSUMPTION AND PRODUCTION



13

CLIMATE ACTION



14

LIFE BELOW WATER

